



MUSEUM OF
ZOOLOGY
UNIVERSITY OF CAMBRIDGE



Museum
Galleries
& Whale Hall
**YOUR NEXT
EVENT VENUE**

www.museum.zoo.cam.ac.uk

ARE YOU LOOKING FOR SOMEWHERE EXTRA SPECIAL TO HOLD YOUR NEXT EVENT?

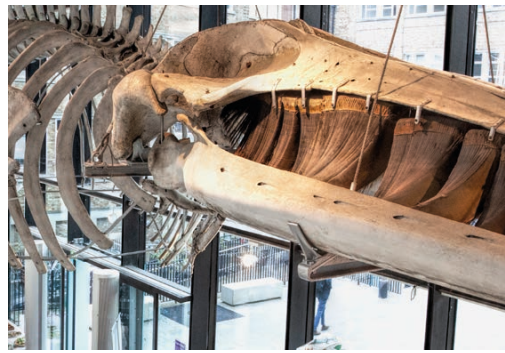
The University Museum of Zoology, as one of Cambridge's major attractions, can provide a unique and memorable space for your event. Located in the heart of Cambridge city centre, the Museum is the perfect place for an evening function.

THE WHALE HALL

The glass Whale Hall, designed especially to house our 21 metre long fin whale, forms an impressive entrance to the Museum and is the perfect space for an evening drinks reception. The Whale Hall can accommodate up to 120 guests for a standing only reception.

THE MUSEUM GALLERIES

The Museum holds many wonderful treasures, such as specimens discovered by the great naturalists, Charles Darwin and Alfred Russel Wallace. If you wish to include access to the galleries as part of your event, the galleries and the Whale Hall can be hired together. Capacity up to 250 guests for a standing only reception.



MUSEUM TOURS

We can also offer guided tours of the Museum galleries for your guests – these are led by our zoology experts, and last around 45 minutes. The tours are subject to staff availability and an additional charge. Please enquire when making your booking.

CATERING

All catering arrangements must be made directly with one of our approved suppliers, a list of which will be provided. Our suppliers can offer a range of refreshments from canapés and champagne, to more substantial 'bowl food'. Should you wish a little more guidance, we are able to recommend a number of caterers who are familiar with the space and give excellent value and service. Please note that food and drink can only be served in the Whale Hall and certain foods and drinks are restricted.

MUSIC

The Whale Hall is able to accommodate some background music, we can provide you with a list of recommended musicians. Due to the nature of the space, certain types of live performance are restricted.

SUITABILITY

Unfortunately, we cannot accommodate children's parties, and do not offer the option for sit down dinners.

ENQUIRIES

Please contact Lisa Sneath ls761@cam.ac.uk or call 01223 765416 to discuss rates and availability.

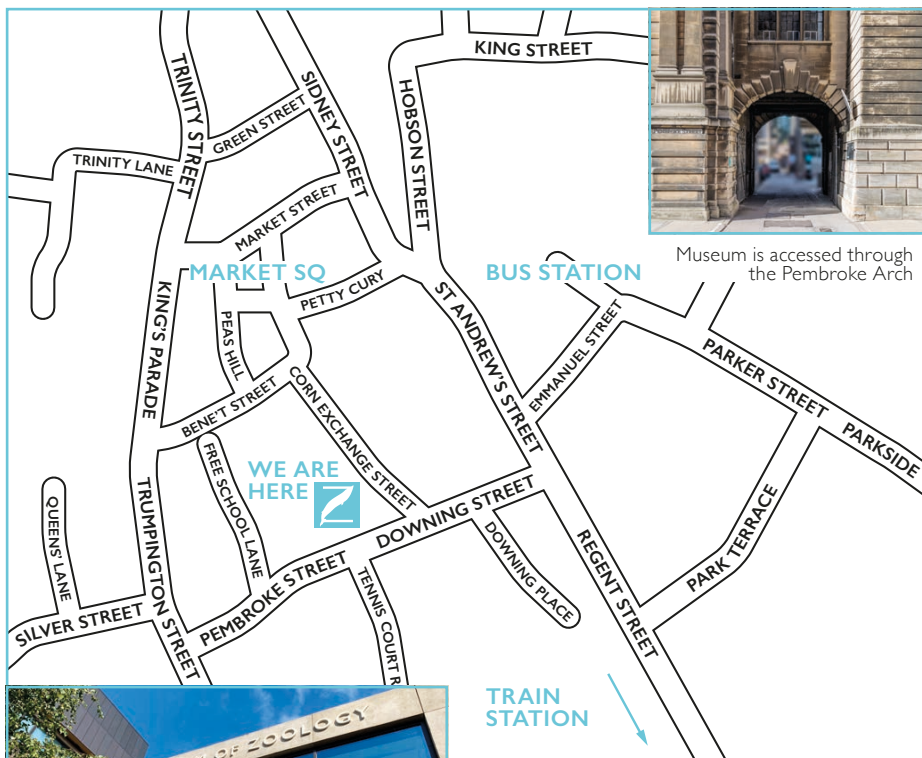


All venue hire income directly supports the care of our collection, our education, public engagement and exhibition programmes. It helps to keep admission free so that the Museum and its treasures are accessible to everyone.

Whale Hall (front cover) & Lower Gallery (left): University of Cambridge/ Julieta Sarmiento photography

Whale (far left): University of Cambridge/ Jacqueline Garget

People in gallery: University of Cambridge/ Mike Cameron



MUSEUM OF ZOOLOGY

David Attenborough Building
Downing Street, Cambridge CB2 3EJ

01223 336650

umzc@zoo.cam.ac.uk

www.museum.zoo.cam.ac.uk

[Twitter: ZoologyMuseum](https://twitter.com/ZoologyMuseum)

[Facebook: ZoologyMuseumCambridge](https://www.facebook.com/ZoologyMuseumCambridge)

[Instagram: museumofzoology](https://www.instagram.com/museumofzoology)

The Museum is open Tuesday–Sunday.
You can hire the Museum from 5pm
any evening, subject to availability.

**Access to the Museum is step free.
There is no parking at the Museum.**

FIND US:

On foot: The Museum is in the David Attenborough Building in the heart of Cambridge City Centre. Find us on the New Museums Site, through the Pembroke Arch on Downing Street.

By car: The nearest car park is the multi-storey Grand Arcade car park.

By bus: The Museum is a five minute walk from the main bus station at Drummer Street.

By train: Central Cambridge station is a 20 minute walk.

SUPPORT US:

You can help us keep entry to the Museum free. Your donation enables us to care for our collections and share them for learning and research.

To find out how, please visit:
www.museum.zoo.cam.ac.uk/about-us/support-us
or email umzc@zoo.cam.ac.uk

