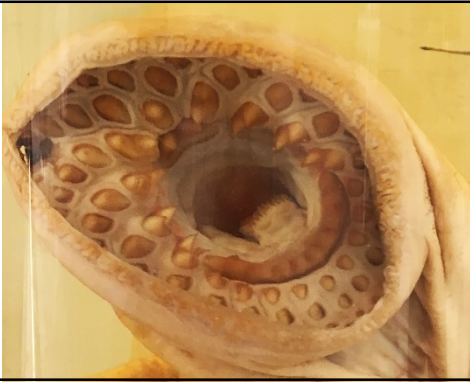


What's for Dinner?

Feeding habits of the animal kingdom.

Find the animals and discover just a few of the amazing ways animals feed!

1.



What type of animal do you think this vicious mouth belong to?

How do you think this animal feeds?

2.

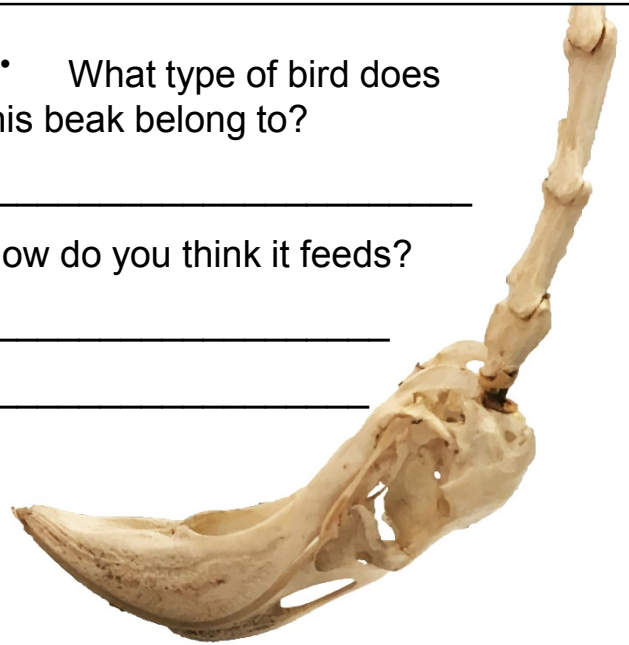
Can you find the animals called Lungfish in the museum. They have structures called **toothplates** on the palate that are used to crush their food. What do these **toothplates** look like?



3.

What type of bird does this beak belong to?

How do you think it feeds?



4.



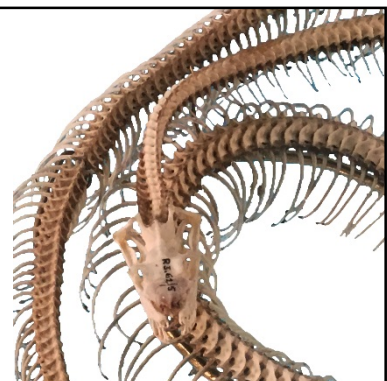
These teeth belong to a large, reptilian meat-eater:

the Nile _____

5.

What type of animal does this skeleton belong to?

Take a look at its skull – it is a series of struts around a bony box that houses the brain. This skull is extremely flexible, and the gape of this animal can be increased massively to take in huge prey. These animals have been known to swallow goats whole!



Mammals have lots of different diets and different ways of feeding:



What type of meat-eating (carnivorous) mammal do these teeth belong to?

The broad teeth you can see here near the back are called carnassials, and they slice through meat.

7. What type of food is this mammal eating with its tubular mouth and long tongue?

Look at the claws of this animal as well. They are important in getting to the food that they eat...



This skull belongs to a coypu. Which group of mammals do coypus belong to? _____

The front teeth of these animals grow continuously through life.

9. Lots of mammals are plant-eaters (herbivores). Draw the tooth of an elephant here. Each tooth is huge, and covered in ridges to rasp away at the tough plant material to break it down.



10. Hanging in the Museum's foyer is the skeleton of a huge Fin Whale. These enormous animals are filter feeders – they sieve tiny animals such as krill out of sea water using baleen – structures made of the protein that makes your hair and fingernails.

What does baleen look like? _____

