

**GO ON SAFARI IN CAMBRIDGE'S  
URBAN JUNGLE AND SEARCH  
FOR ANIMALS OF LAND AND  
SEA IN THE BUILDINGS**

- 1 Golden spiral:** Not golden in colour as it is made from slate, but this artwork by Ackroyd and Harvey is inspired by the Golden Spiral of geometry. Find the Nautilus shells in the Museum for an example of this in nature.
- 2 Camel:** Can you spy the camel in Market Square? It has just one hump – one-humped camels are called dromedaries. Find the dromedary in the Museum and you will see the hump has no bone inside.
- 3 Hippocampi:** These mighty seahorses on the Guildhall may be mythical creatures, but look like the beautiful seahorses we see in the wild. Find some in the upper gallery of the Museum – how are they different?
- 4 Chronophage time-eater:** One of the newest animal additions to Cambridge is an imaginary creature atop the Corpus Christi clock. What does it remind you of?
- 5 Scallops:** A trickier one to spot are the scallops in the coat of arms of Gonville and Caius College. Find the scallops in the Museum – how many colours can you find?
- 6 Snake:** Look carefully you'll find a brightly coloured snake high on the gates to Magdalene College.
- 7 Beehive:** There are lots of animals on the Lloyds Bank building here, from squirrels to bees in a beehive. How many animals can you spot?
- 8 Owl:** Can you see the owl with a pestle and mortar? This was once the shopfront of Peck's chemists. Visit the Discovery Space of the Museum and you can see barn and snowy owls.
- 9 Woolly Mammoth:** Find this woolly mammoth beneath the windows of the Sedgwick Museum. A bit smaller than it would have been in real life – check out our mammoth tusk in the lower gallery of the Museum for scale.
- 10 Fish:** How many fish can you count in the centre of Parker's Piece? Have you seen any other fish on the buildings around Cambridge?
- 11 Polar Animals:** Polar bears from the Arctic and penguins from the Antarctic are brought together on the Polar Museum. Can you find any polar animals in the Museum of Zoology?
- 12 Lions:** Lions feature on the coat of arms for Cambridge University, and can be seen all over the city.
- 13 Whale:** Whalecome to the Museum of Zoology! Here you'll be greeted by Cambridge's largest resident – our magnificent fin whale.

**MUSEUM OF ZOOLOGY**

David Attenborough Building  
Downing Street, Cambridge CB2 3EJ

[umzc@zoo.cam.ac.uk](mailto:umzc@zoo.cam.ac.uk)

[f](#) ZoologyMuseumCambridge  
[@](#) museumofzoology [t](#) ZoologyMuseum

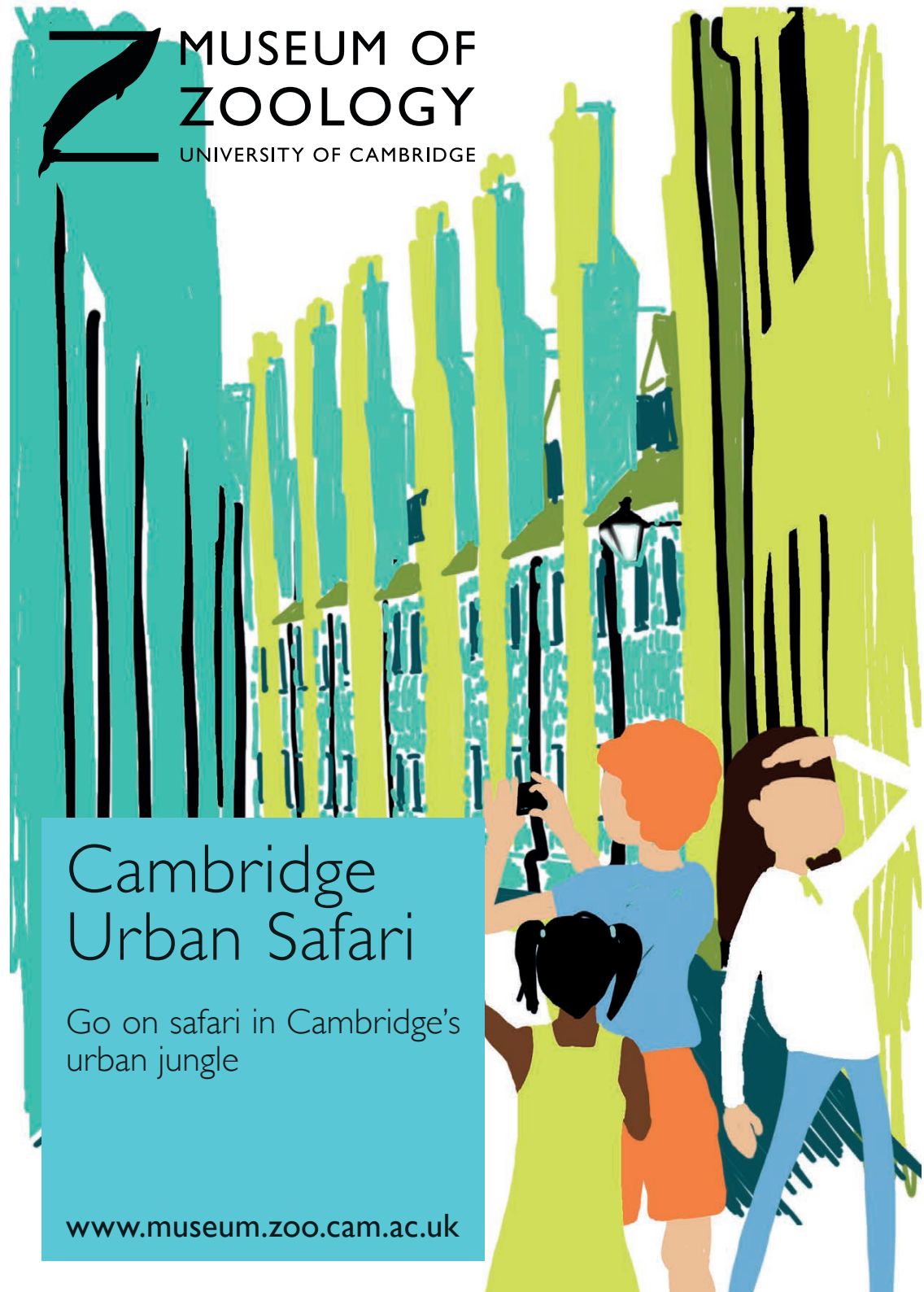
Illustrations and Map design © University of Cambridge / Fanny Bara Moreau

**MUSEUM OF  
ZOOLOGY**  
UNIVERSITY OF CAMBRIDGE

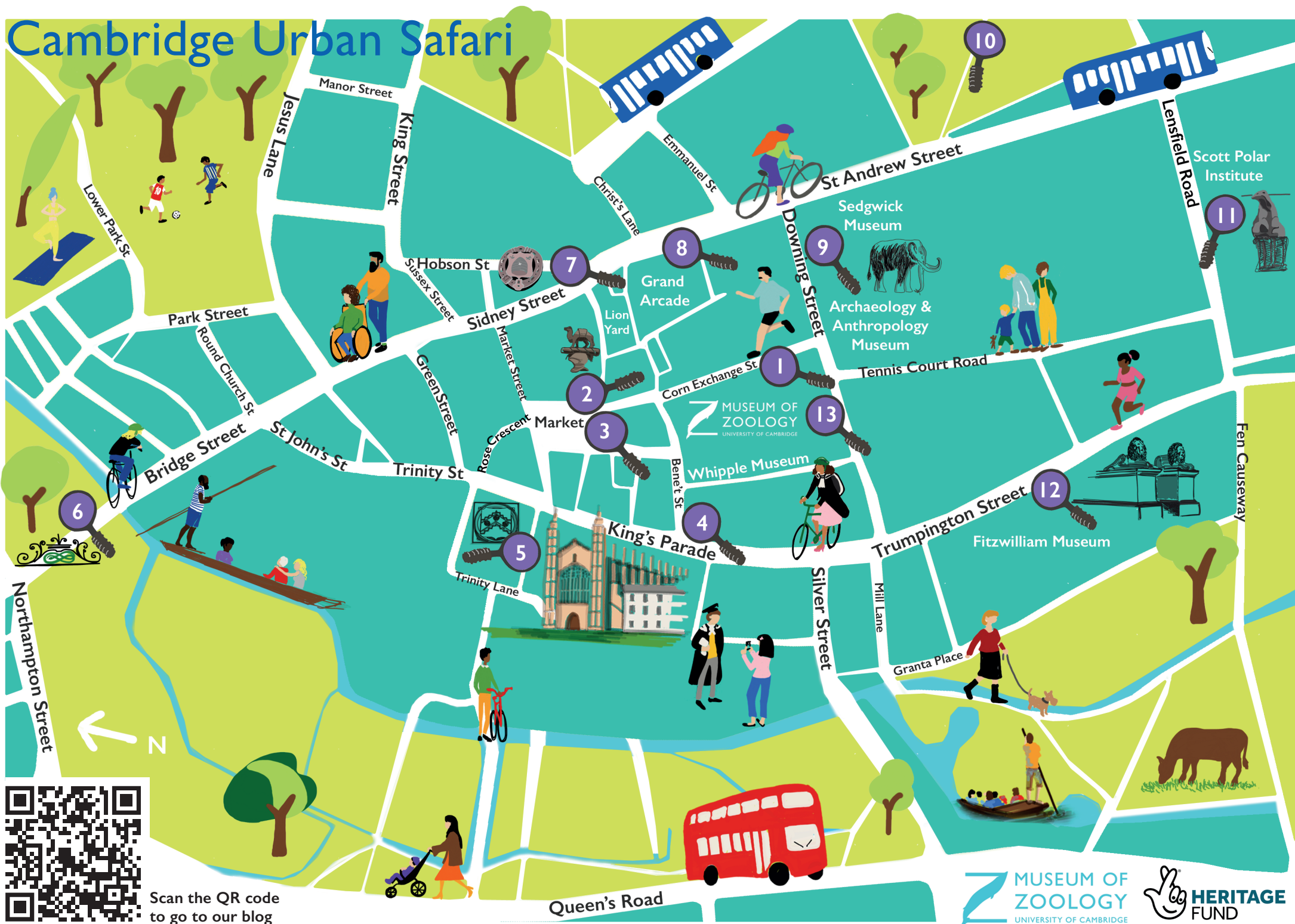
Cambridge  
Urban Safari

Go on safari in Cambridge's  
urban jungle

[www.museum.zoo.cam.ac.uk](http://www.museum.zoo.cam.ac.uk)



# Cambridge Urban Safari



Scan the QR code  
to go to our blog

**MUSEUM OF  
ZOOLOGY**  
UNIVERSITY OF CAMBRIDGE

**HERITAGE  
FUND**